

PETRAL⁷

COMPANY PROFILE

Today, PETRAL

PETRAL is an Italian Company specialized in Raised Flooring Systems.

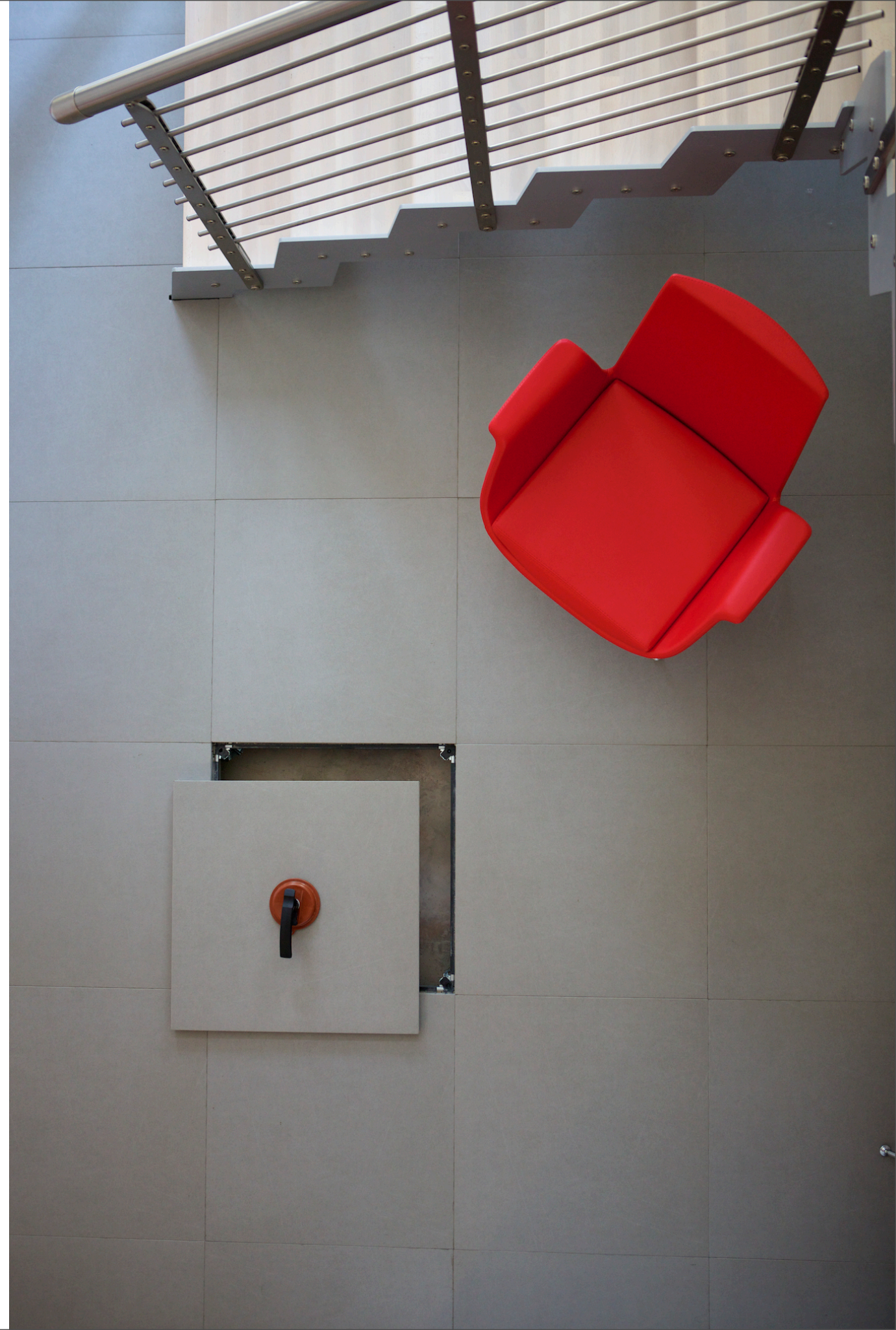
Founded in 2004 has developed and distinguished for technological innovation, the high quality of its products and the great attention paid to the customer. In PETRAL, the primary goal is to produce quality products that guarantee advanced technical solutions adapted to any type of project. Our paving systems are present in major projects of Architecture and in the most complex contexts where great technical expertise and organizational capacity are required, this thanks to the professionalism and experience of our staff. We pay great attention to environmental responsibility and the use of environmentally friendly products which meet the criteria of sustainable construction.

In the pages that follow, we present our company and the added value we want to offer our customers in the world.

*Arch. Stefano Carnevale
Presidente*

THE COMPANY

PETRAL production is carried out at the Sommariva Bosco plant, which has an area of 8,000 square meters and a production capacity of more than 450,000 square meters per year, thanks to which is possible to realize large projects in short time. PETRAL headquarters is based in Racconigi and it is destined to research, design and commercial and administrative activity.





VISION

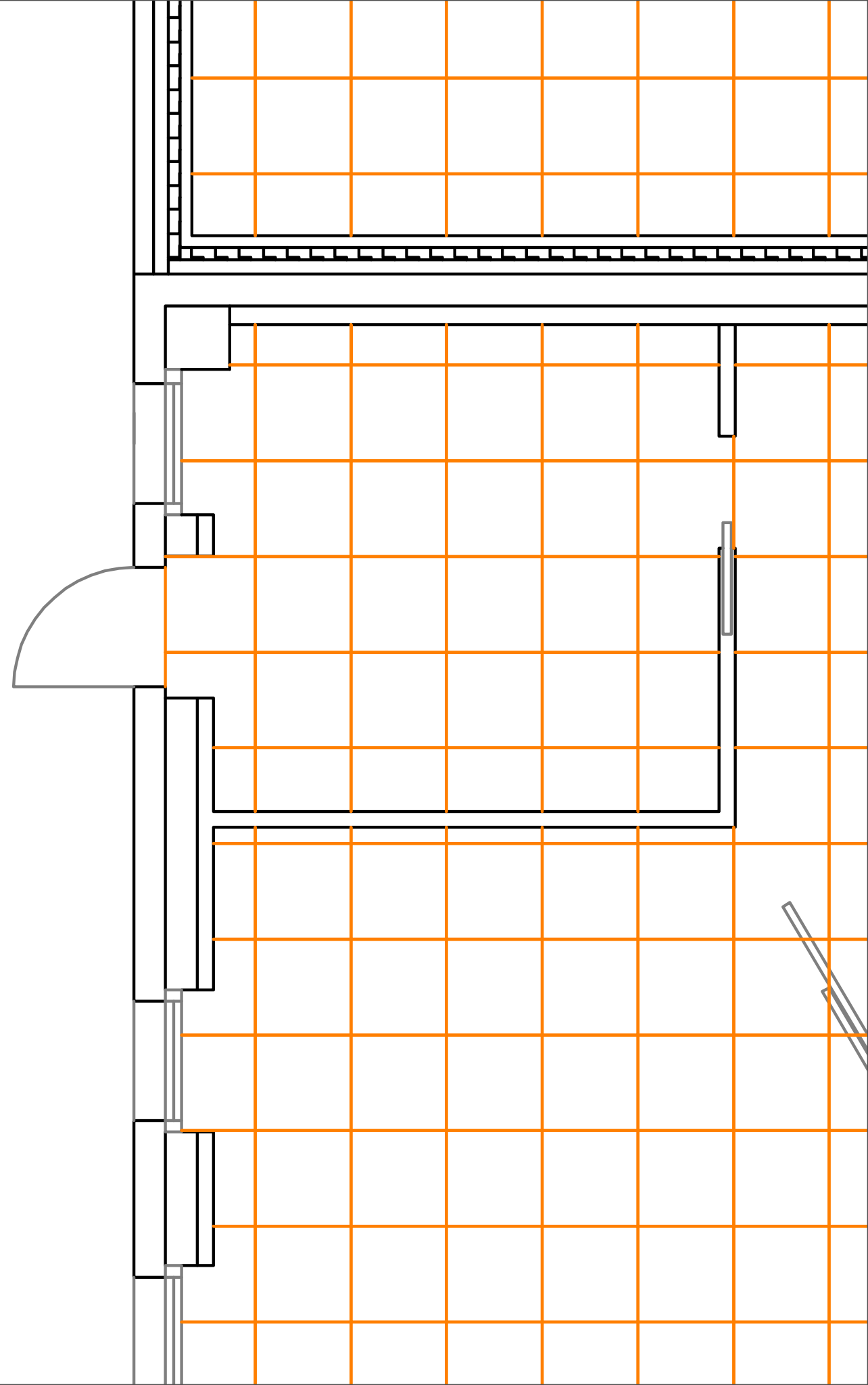
Build upgraded floors with innovative and exclusive solutions that can contribute to expanding the uses of our systems and to stand out in the global market.

MISSION

To propose high quality systems and technical solutions for large architectural projects.


TECHNICAL SERVICE

Our technical office is structured to support the client in the development and in the analysis of the projects by computing the necessary materials and components and through the search of the best technical solutions, suitable to the specific demands.



CERTIFICATES AND TECHNICAL DATA SHEETS

PETRAL products have Certifications according to the European Standard for raised flooring EN 12825 in addition to ministerial approvals.

 ISTITUTO GIORDANO		Istituto Giordano S.p.A. Via Roma 2 - 47814 Bellaria-Igea Marina (RN) - Italia Tel. +39 0541 343200 Fax +39 0541 343540 istitutogiordano@giordano.it - www.giordano.it PEC: ist.giordano@legalmail.it Cod. Fisc./Part. IVA: 00549540489 - Cap.Soc. € 1.500.000 i.v. R.E.A. c/o C.C.I.A.A. (RN) 156746 Registro Imprese di Rimini n.00549540489	
Laboratorio autorizzato dal Ministero dell'Interno con codice n. RN/018F01 del 13/05/2010 (G.U. n. 126 del 01/06/2010)			
TEST REPORT AND CLASSIFICATION No. 300192/RF5969		File No. 57573	
<p>issued pursuant to section 8 of decree of the Ministry of the Interior dated 26th June 1984 entitled "Classification of reaction to fire and type approval of materials for fire prevention" (Ordinary Supplement of Official Journal No. 234 dated 25th March 1984) as amended by decree of the Ministry of the Interior dated 3rd September 2001 (Official Journal No. 242 dated 17th October 2001) and section 4 of decree of the Ministry of the Interior dated 1st March 2005 specifying "Classes of reaction to fire performance for construction products for use in works having a safety in case of fire requirement" as amended by decree of the Ministry of the Interior dated 3rd October 2007.</p> <p>In view of the test results obtained, we certify that the construction product manufactured by: PETRAL S.r.l. - Strada del Molino Nuovo, 9 - 12035 RACCONIGI (CN) - Italy; name: S34; used as: raised access flooring; installation: resting on a metal structure;</p> <p>is assigned, in accordance with standard UNIEN 13501-1:2009 dated 26/11/2009 "Fire classification of construction products and building elements - Part 1: Classification using data from reaction to fire tests", the</p>			
REACTION TO FIRE CLASS			
B_{FL}-s1			
Limitation: this classification is not valid when there are possible ignition sources in the air gap.			
This certificate is only valid for the test specimens.			
Bellaria-Igea Marina - Italy, 22/11/2012			
Reaction to Fire Laboratory Manager: Dott. Gian Luigi Baffoni		Chief Executive Officer (Dott. Nazario Giordano)	
Comp. AV Revis. AG		This test report and classification consists of 1 sheet and is supplemented by 2 annexes with the test results and manufacturer's technical documentation. This document is the English translation of the test report and classification No. 300192/RF5969 issued 22/11/2012 issued in Italian in case of dispute the only valid version is the Italian one. Date of translation: 30/05/2014.	
CLAUSES: This document relates only to the sample or material tested and shall not be reproduced except in full without Istituto Giordano's written approval.		Sheet 1 of 1	
Sì richiamano tutti gli obblighi previsti dal Codice Civile, del Codice Penale e dei decreti ministeriali 26 giugno 1984 e 3 settembre 2004.			
<p>Il presente atto, ad eccezione dei casi di decadenza e revoca dell'omologazione previsti dall'art. 9, punti 2 e 3, del D.M. 26/6/84, ha una validità di 5 anni dalla data di rilascio ed è rinnovabile alla sua scadenza. Inoltre il presente atto decade, ai fini della produzione, al termine del periodo di coesistenza previsto per la specificazione tecnica relativa al materiale medesimo, in conformità a quanto previsto dal D.M. 10/03/2005 al quale si rimanda per gli opportuni approfondimenti.</p>			
Roma, 22 MAG. 2013		IL DIRETTORE GENERALE (Datto)	
Fasc. 3807 sott.3507 N.B. IL PRESENTE ATTO DI OMOLOGAZIONE È RIPRODUCIBILE UNICAMENTE NELLA SUA INTEGRALE STESSURA			

PRODUCT RANGE

Two lines of PETRAL products: raised access floors for Indoor and for outdoors. Both lines are based on components that meet different design criteria and have panels and specific support according to the required type of use.



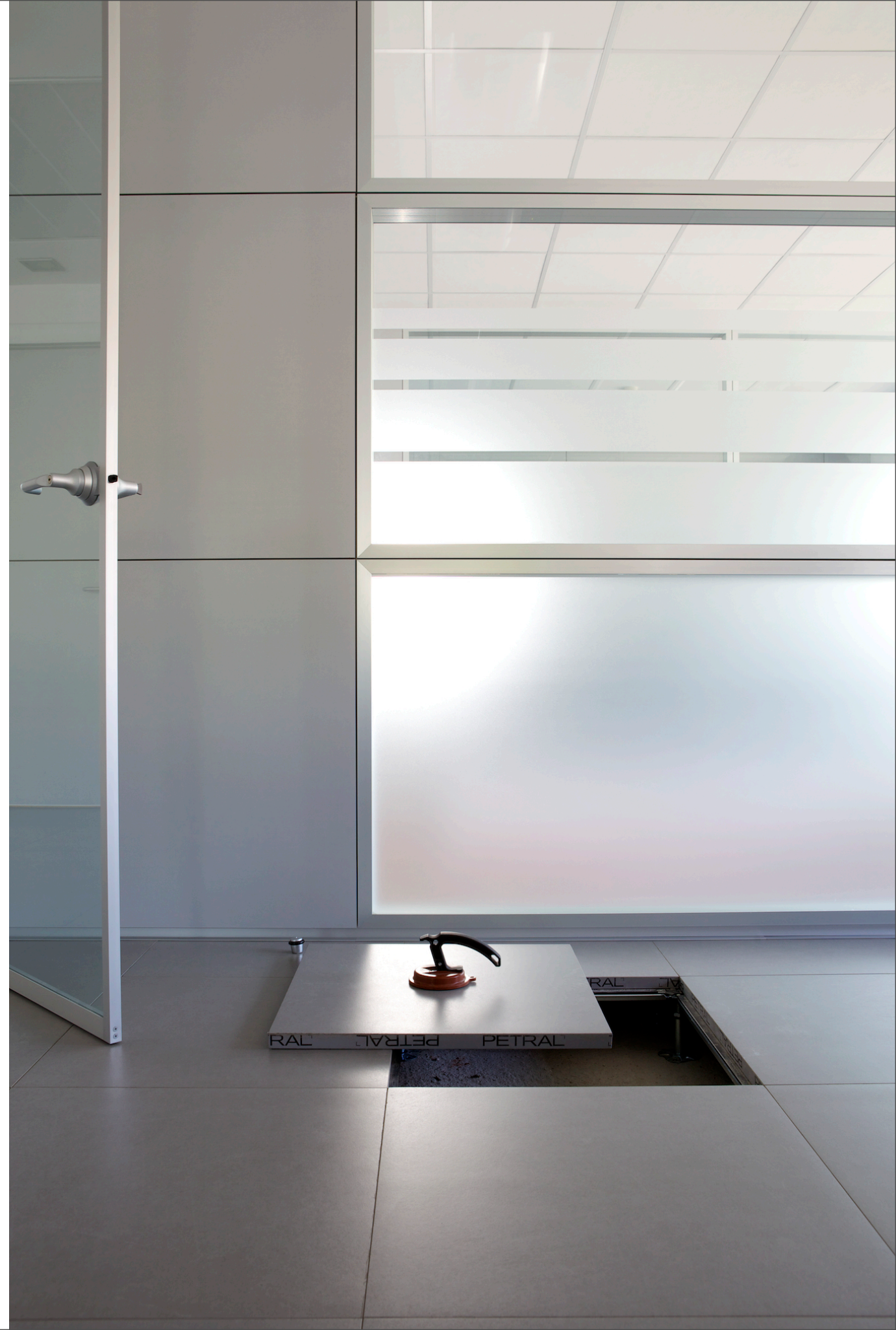
RAISED FLOOR

The elevated floor PETRAL is a modular panel system laid on adjustable height structure. This system allows to create a technical vain under the floor useful for the passage of fitting and equipment. The system components are: PANEL, TOP FINISH, BOTTOM FINISH AND STRUCTURE.



PANELS

The range of panels CHIPBOARD, CALCIUM SULPHATE, ENCAPSULATED or BRICKTILE and top finish types (HPL, PVC, Linoleum, Porcelain Stoneware, Parquet, Marble, Granite) meets different requirements design.



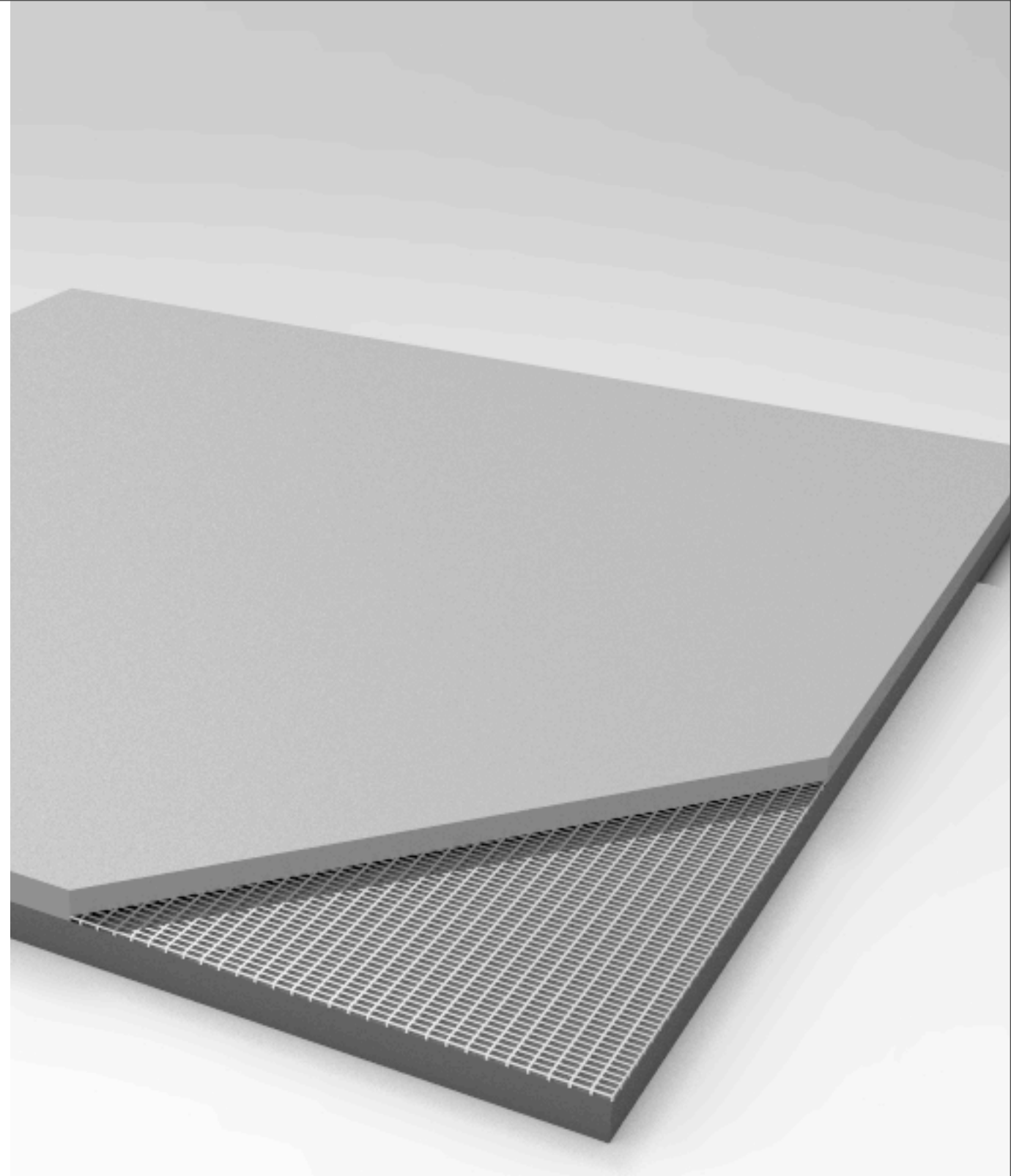
BRICKTILE

The BRICKTILE panel is the only one that can be used both inside and outside, thanks to its resistance to water and to the atmospheric agents. Composed by a ceramic base support, BRICKTILE guarantees high loading performances and fire resistance.

Total thickness 25 mm including top finish

Density 2200 Kg / mc

Water absorption 0,16% after 24 hours of immersion



DISTRIBUCION



PETRAL products are present in over 40 countries around the world, thanks to a network of qualified and selected distributors.

PETRAL systems are now distributed in the following countries:

ALBANIA, ALGERIA, SAUDI ARABIA, ARGENTINA, BANGLADESH, CHILE, CHINA, COLOMBIA, COSTARICA, CYPRUS, DEUTSCHLAND , UNITED ARAB EMIRATES, EGYPT, FRANCE, GEORGIA, GHANA, JORDAN, ICELAND, ITALY, KUWAIT, LIBYA, LUXEMBOURG, MALTA, MOROCCO, NIGERIA, OMAN, PAKISTAN, PANAMA, PARAGUAY, PERU', POLAND, PORTUGAL, QATAR, CZECH REPUBLIC, RUSSIA, SPAIN, SWITZERLAND, TUNISIA, URUGUAY, U.S.A , VENEZUELA.

REFERENCES AROUND THE WORLD

SEC SUPREME EDUCATION COUNCIL - Qatar 40.000 mq
TORRE CONSULTATIO -Argentina 32.000 mq
MILLENIUM TOWER / BBVA - Chile 18.000 mq
Office Building Sevilla -Spain 9.000 mq
ATHIENITIS BUILDING Cyprus 3.000 mq
BANCO SANTANDER - Spain 4.300 mq
Office Building San Pietroburgo - Russia 3.000 mq
TERNIUM - Mexico 3.000 mq
WTC WORLD TRADE CENTER Montevideo - Uruguay
TAMSA - Gruppo Techint - Mexico
BINGO NAVAS - Spain
RAIFFEISEN BANK - Luxemburg
SOLUMN - Luxemburg
LUX CONNECT - Luxemburg
AL WAKRA SECURITY COMPLEX - Qatar
NEW TELECON SECURUTY BUILDING - Qatar
CHINA TECH - Cina
QATAR FOUNDATION - Qatar
QATAR PETROLEUM - Qatar
STF COMPLEX - Oman
MILITARY BUILDING - Pakistan
CENTRO DE JUSTICIA DE MALDONADO - Uruguay
GALERIA DO LITORAL - Uruguay
CASINO DE ROSARIO- Argentina
CAF -Panama
MAPFRE - Paraguay
BANELCO - Argentina
BROU - Uruguay
ANTEL - Uruguay
PKB BANK - Panama
CERN - Switzerland
IMPRETICO - Switzerland
STF COMPLEX - Oman
PALAZZO DE JIUSTICIA DE TORRELAVEGA -Spain
KAYBIZ -Thailand
BBVA - Uruguay
DEWA - Dubai
MINISTRY OF FOREIGN AFFAIRS - Kuwait
BLADEx TOWER - Panama
SAMRA - Giordania
NIDA - Tunisia
TAMSA - TECHINT Mexico
MTN DATA CENTER - Nigeria
CIVIC CENTER TOWER - Nigeria
TELECON DATA CENTER - Kuwait
RENZETTI & PARTNER - Switzerland

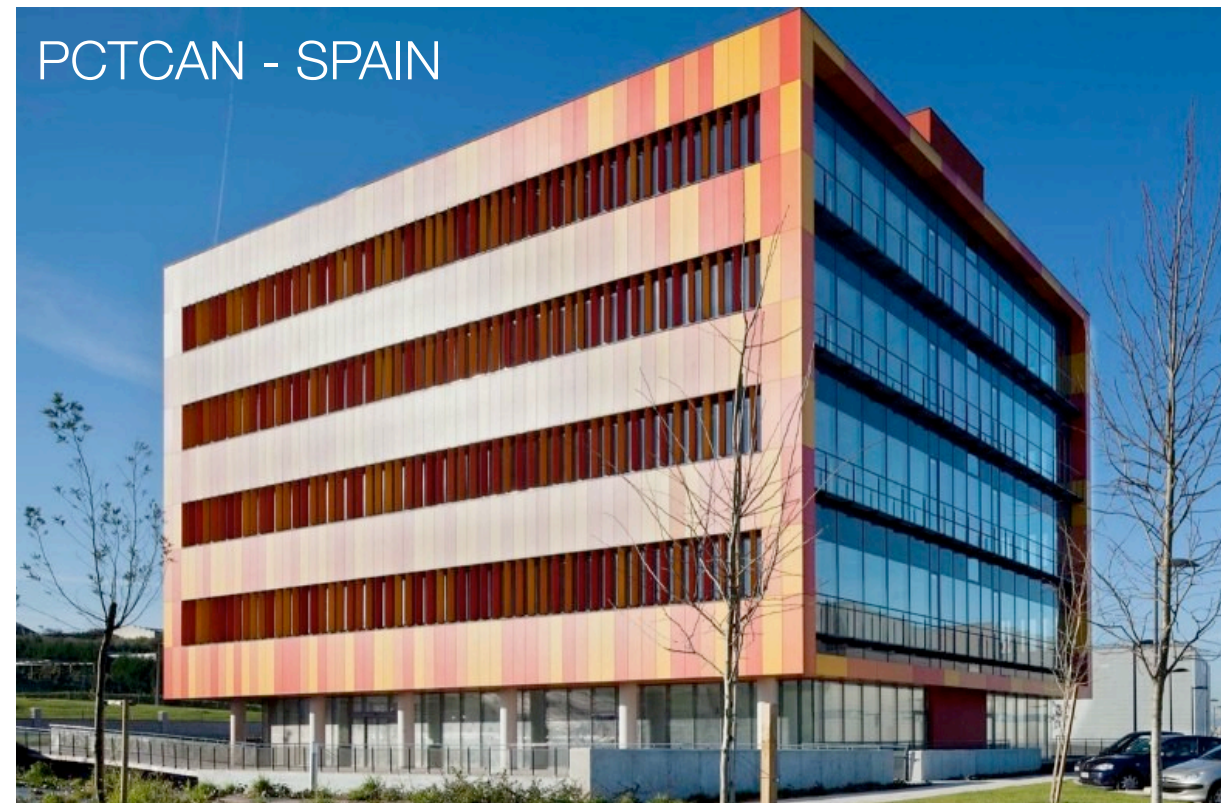
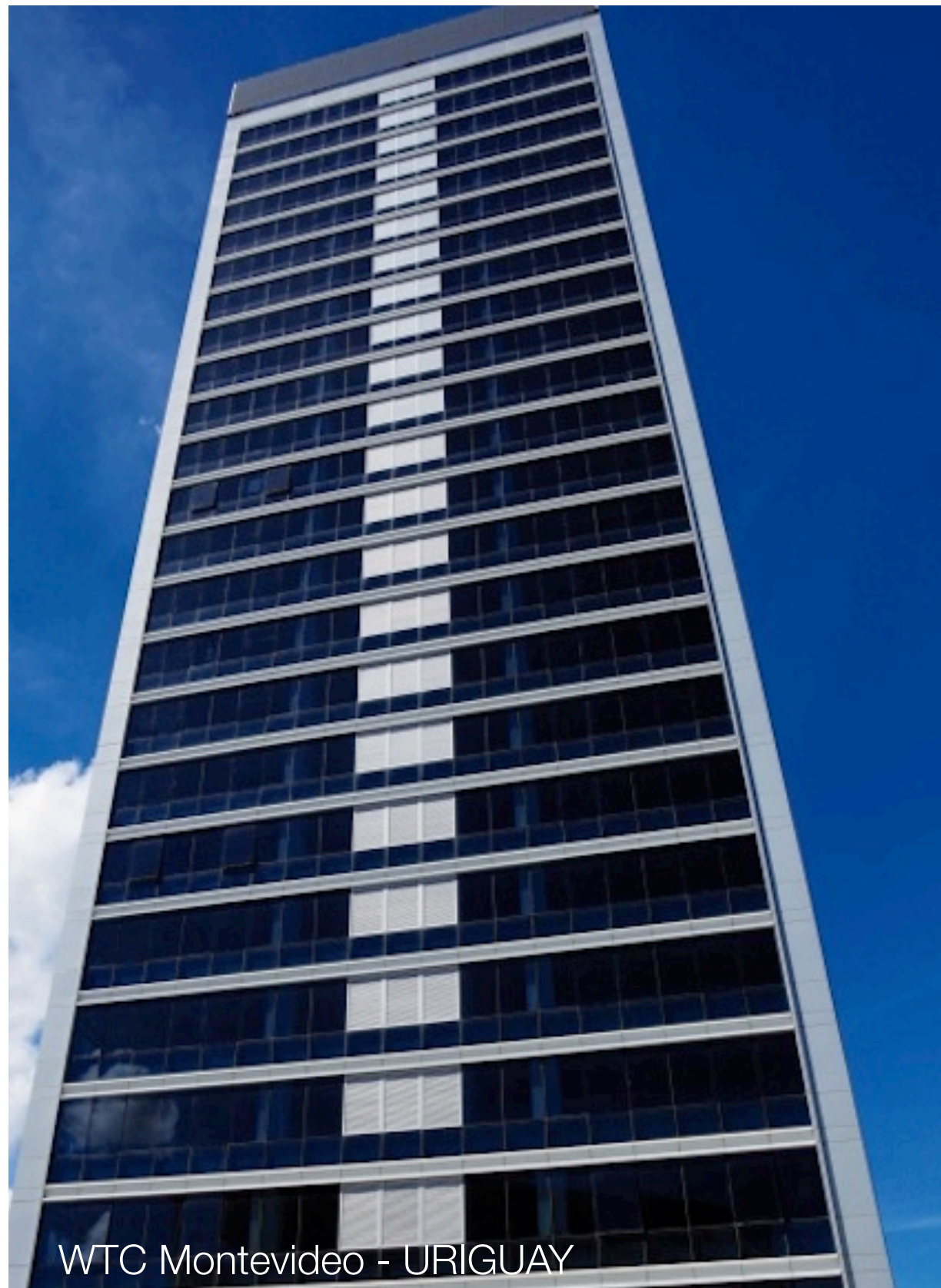


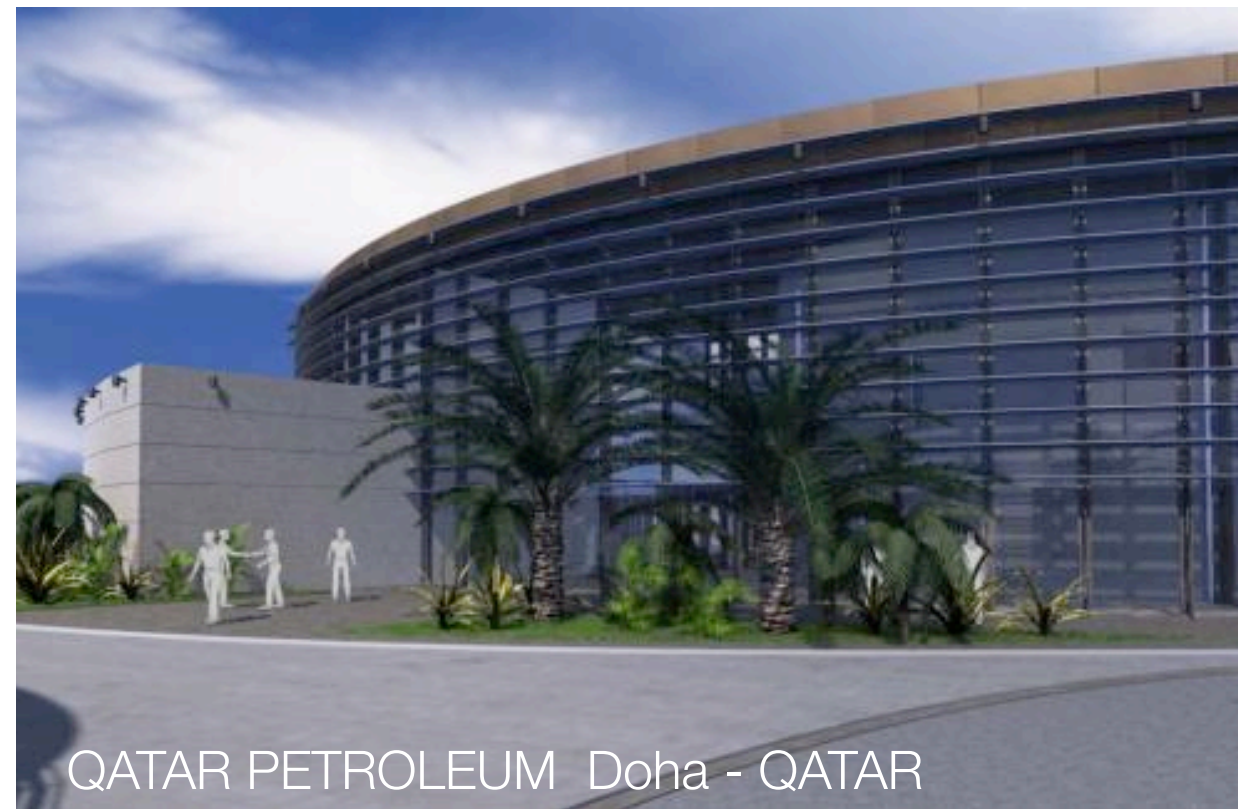
REFERECES IN ITALY

AMAZON DATA CENTER 10.000 mq
TECNICHE NUOVE - Milan 4.000 mq
ENI / NATALI La Spezia 3.000 mq
FURLA Office - Milan 2000 mq
COMUNE DI BERGAMO 1.600 mq
CASTEL ROMANO SHOPPING CENTER 1.250 mq
PIAGGIO 1.100 mq
ORSERO 1.800 mq
ACI Torino 1.700 mq
JUVENTUS VILLAGE Turin
H&M Turin
IKEA
SNAM
FCA Cassino
RAI Torino
RAI Firenze
SELEX / FINMECCANICA
MUSEO DELLA BOXE
CAFFE MILANI
RENAULT
ROSSIGNOL
SYSTEM EVOLUTION
SAN SIRO MILAN STORE
FERRERO
ANTONIO LUPI
UNIVERSITA' DELL'AQUILA
FAMAR
OLIVETTI
GRANDI NAVI VELOCI
SNAM
NOVOTEL LINATE
INTRALOT
SAE POWER
SAXA RUBRA
BONETTO IMPIANTI
CALOSSO
SERVIZI ACA
TECKSPAN
SATA
GAI
ASTRA TRASPORTI
CAFFE' VERGNANO
C.R. BRA
BANCA D'ALBA
ZERBINATI
PETRONAS
BETONSERVICE
CASEIFICIO LONGO
PENSOTTI
ARKEM
PICCINI
REALE MUTUA ASSICURAZIONE -Torino
PIZETA PHARMA
FRA PRODUCTION
PERNOT RICARD CANELLI
DELFIN
COOPERATIVA TRASPORTI
ADEA
SEMPLA
C.R SAVIGLIANO









PETRAL⁷

PAVIMENTI SOPRAELEVATI

Petral s.r.l. - Strada del Molino Nuovo, 9
12035 - Racconigi (CN) - Italia
tel.: +39 0172 85329 / 85416
fax: +39 0172 820418

www.petral.it